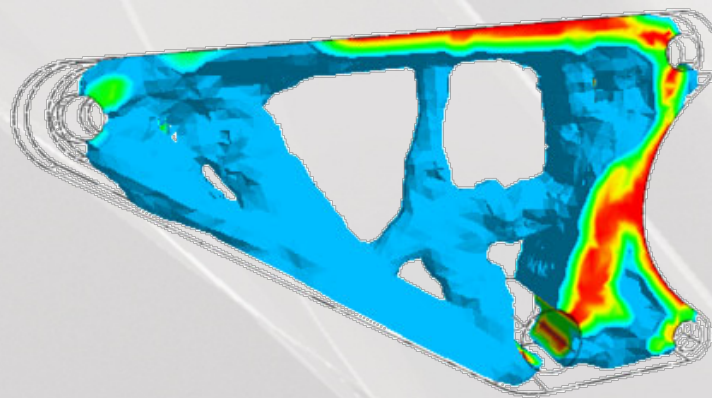
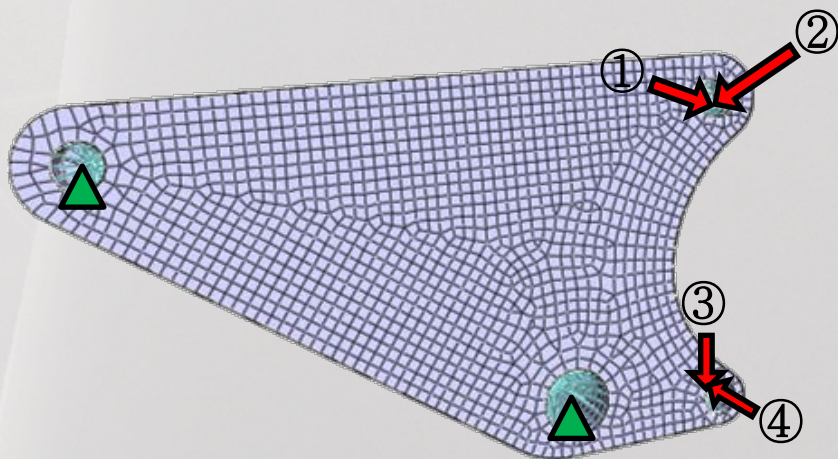


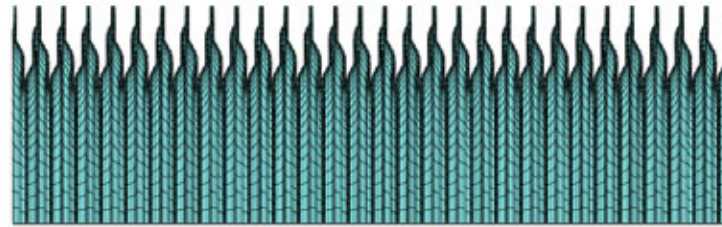
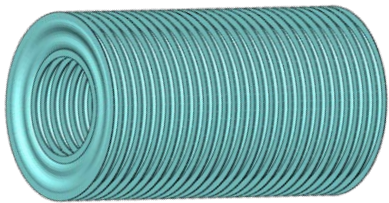
機械零件案例



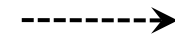
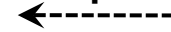
midas NFX

midas **NFX**

一 分析模型

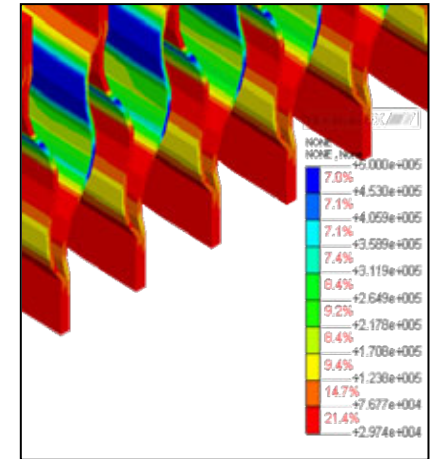
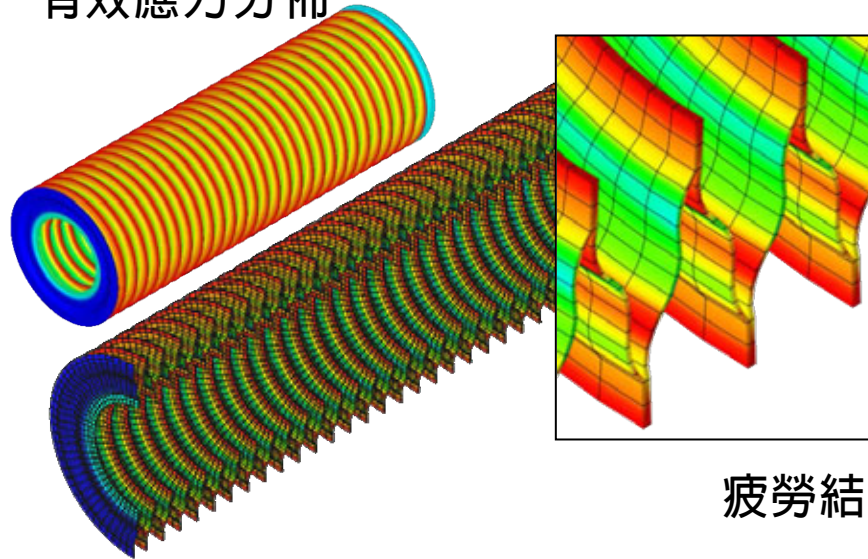


Step 1. 壓縮



Step 2. 伸展

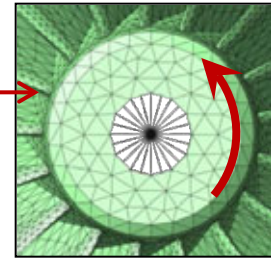
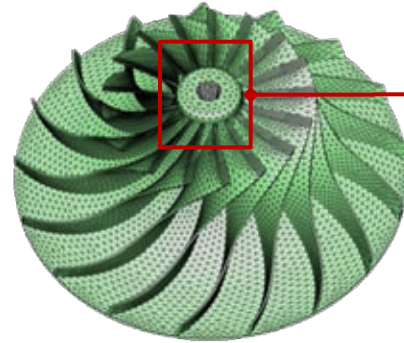
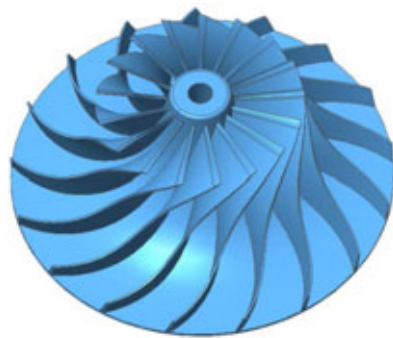
有效應力分佈



疲勞結果 (疲勞壽命)

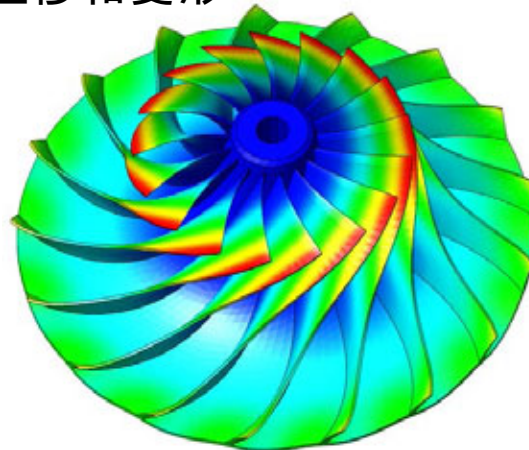
midas **NFX**

一 分析模型

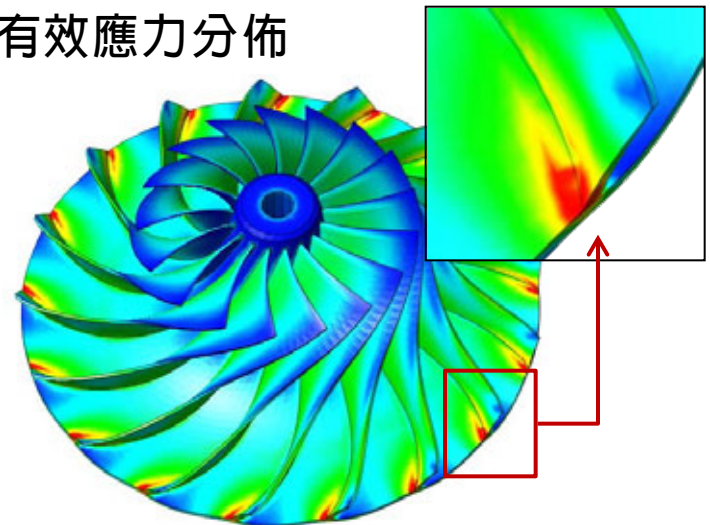


離心力 (RFORCE)

位移和變形



有效應力分佈

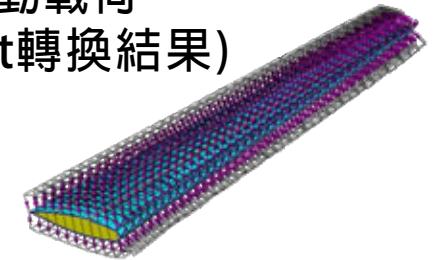
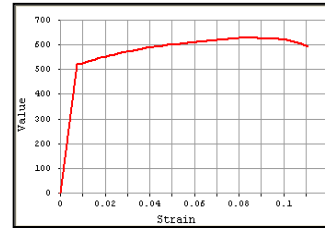
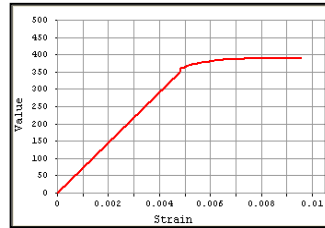


midas **NFX**

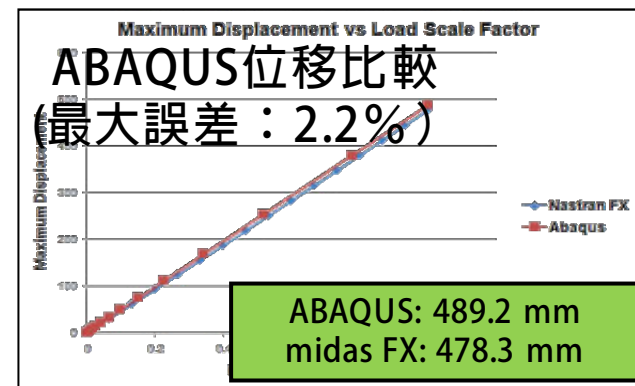
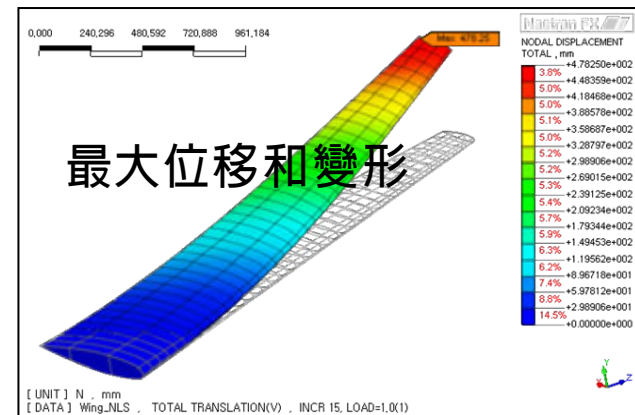
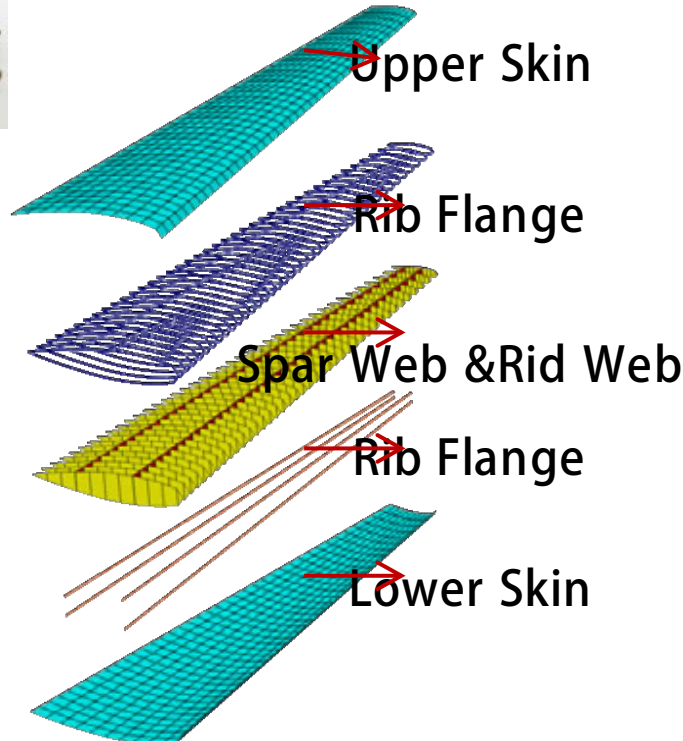
彈塑性材料模型定義 (應力 - 應變)

氣動載荷
(Fluent轉換結果)

一 分析模型

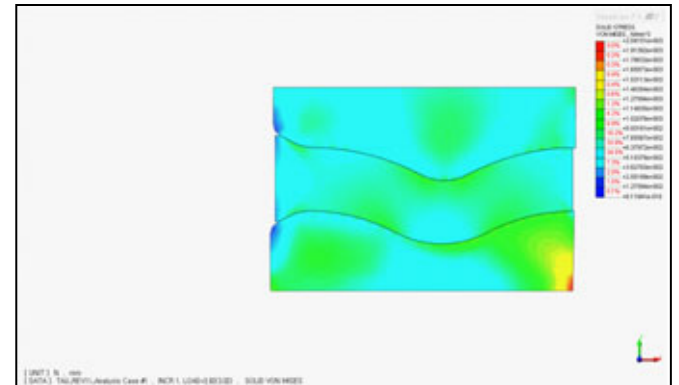
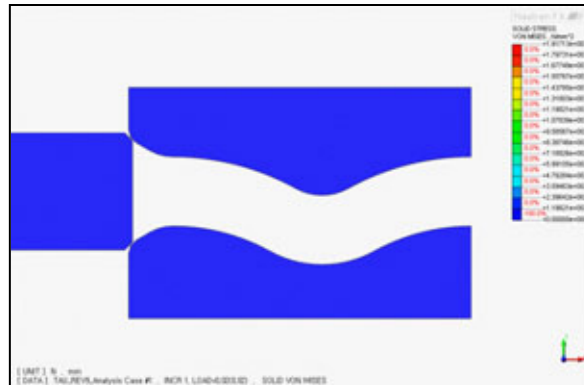
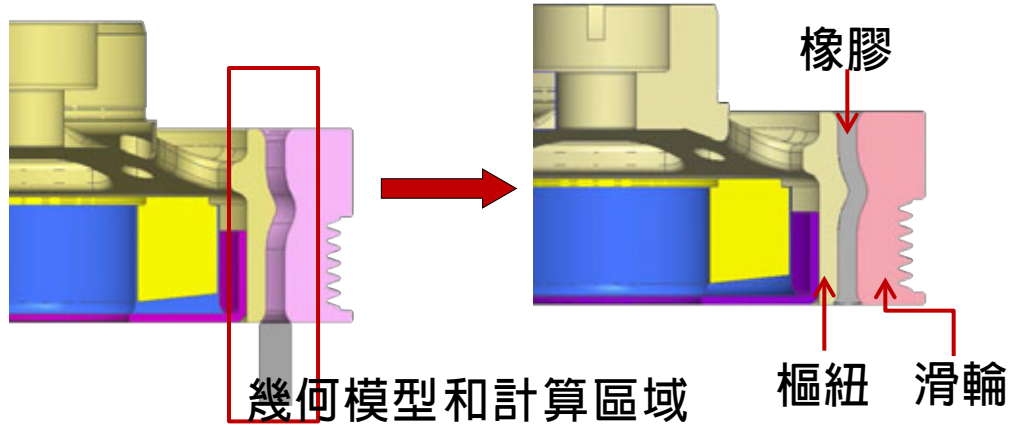
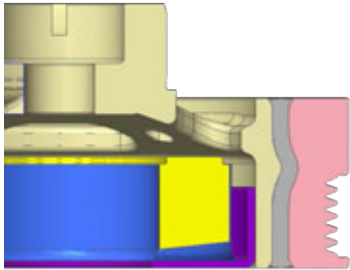


CATIA外部造型



midas **NFX**

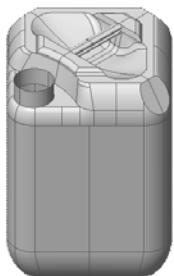
一 分析模型



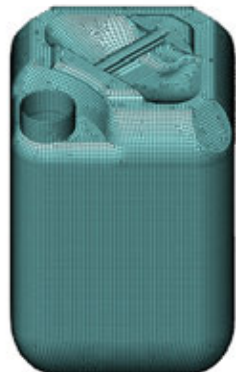
橡膠壓痕過程

midas **NFX**

— 分析模型



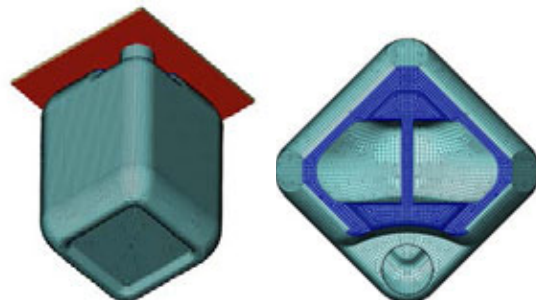
分析模型



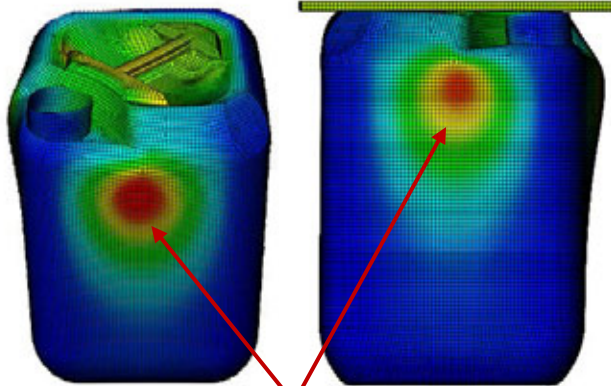
加載條件(下壓1.6mm)



邊界條件

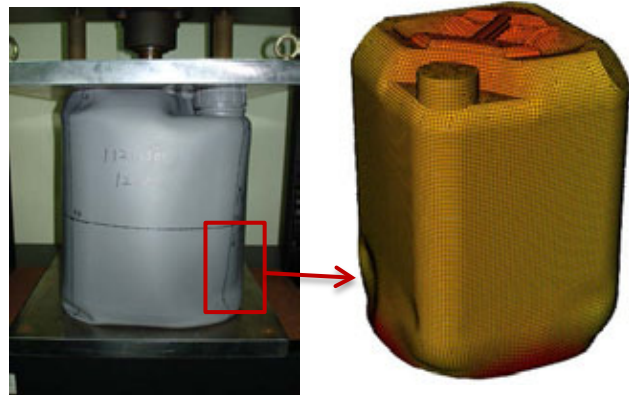


線性靜態分析



發生彎曲變形

非線性分析



測試結果